

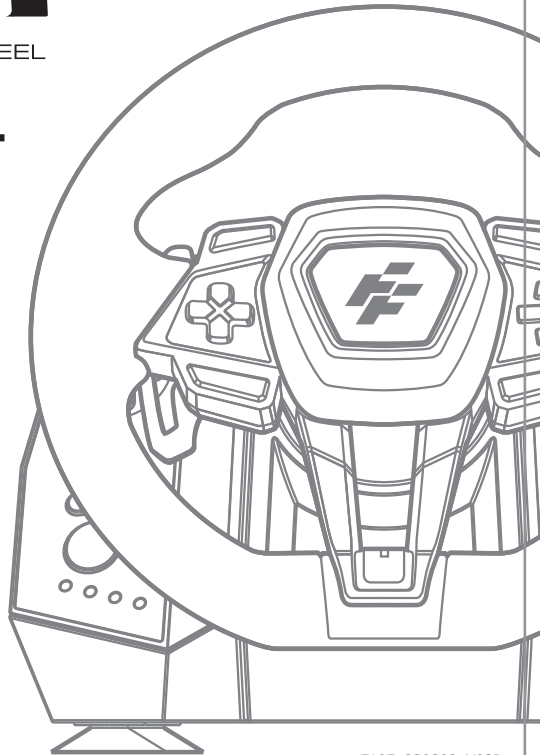


# ***MOLA***

FORCE FEEDBACK RACING WHEEL

## **USER MANUAL**

**F107**

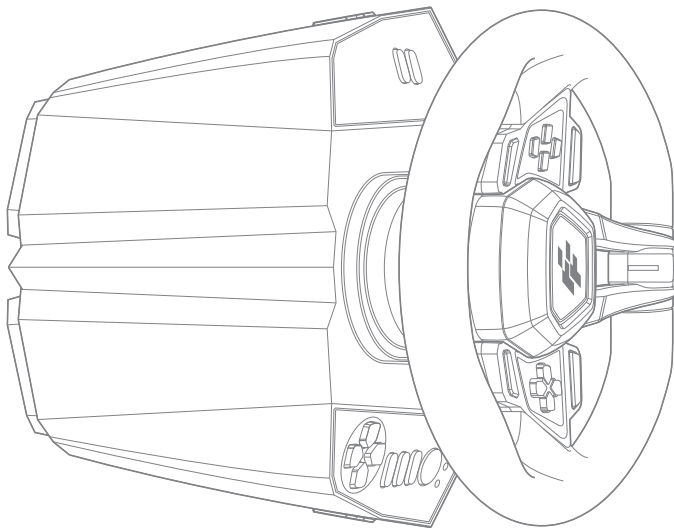




# TABLE OF CONTENTS

EN ..... 01 - 08

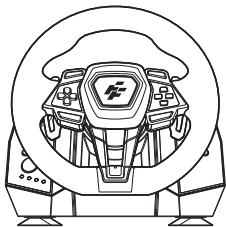
CN ..... 09 - 16



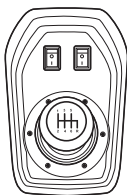
## OVERVIEW

The IMOLA Force Feedback gaming steering wheel is a 900-degree wired steering wheel designed for the PC, PS4, XBOX ONE and XBOX Series X/S platforms; it looks beautiful and delicate and has a built-in smart drive motor. It is equipped with desktop stabilizing frames, DC24V/2A power required and adopts magnetic encoders. The steering wheel has an automatic centering function when power is connected and it works with accelerator/brake/clutch pedals as well as a six-speed shifter, realizing the feeling of a real race car.

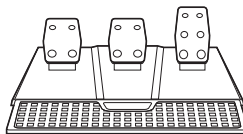
## PACKAGE CONTENTS



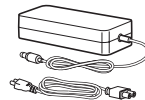
IMOLA-Racing Wheel\*1



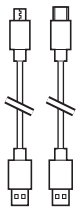
Gear Shifter\*1



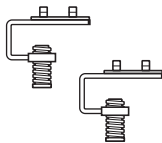
Foldable Pedals\*1



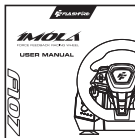
Power Adapter\*1



MICRO USB CABLE\*1  
TYPE-C CABLE\*1

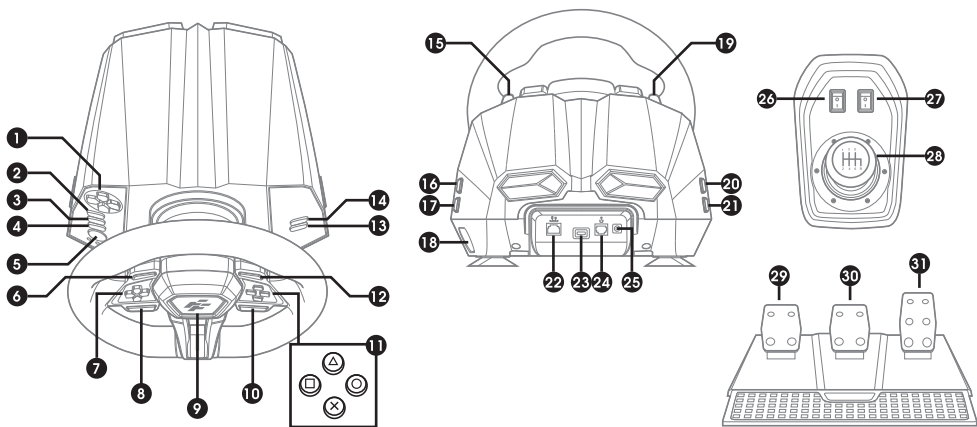


Mount Clamps\*2



User Manual\*1

## | BUTTONS LAYOUT / FUNCTIONS



01. Breathing light adjustment

02. PROG

03. L3

04. R3

05. HOME

06. L1

07. D-pad

08. L2

09. LED breathing light

10. R2

11. A/B/X/Y buttons

12. R1

13. OPTIONS

14. SHARE

15. Right paddle shifter

16. R2

17. 

18. Guiding port

19. Left paddle shifter

20. L2

21. Setting key of LED breathing light

22. Port of foot pedals

23. USB port of steering wheel

24. Port of shifter

25. Power port

26. MODE

27. HAND-BRAKE switch

28. Gears 1-6 + R gear

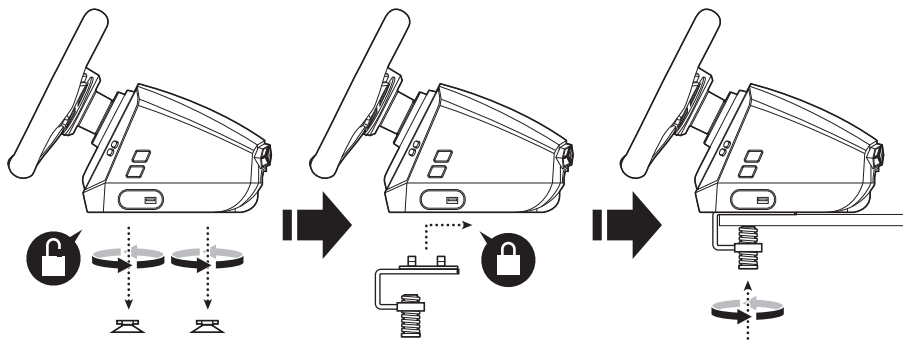
29. CLUTCH

30. BRAKE

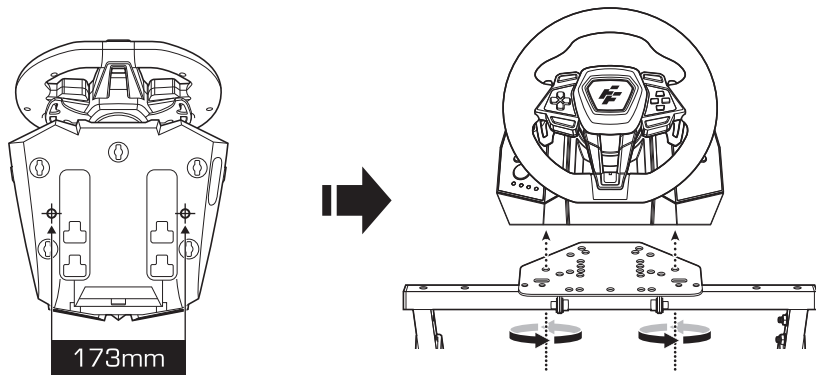
31. ACCELERATOR / GAS

## INSTALLATION OF MOUNTING CLAMPS:

INSTALLATION OF MOUNTING CLAMPS:

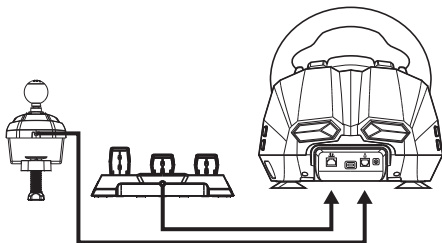


INSTALLATION OF RACING SEAT/STAND:

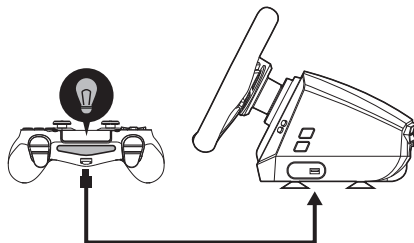


## QUICK INSTALLATION - CONNECTION WITH PLAYSTATION®4

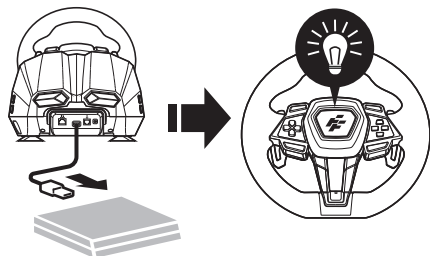
1. Plug the shifter and foot pedal into the corresponding ports of the steering wheel



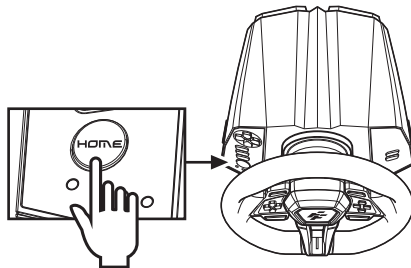
2. Plug the DS4 controller to the USB port on back of steering wheel for guiding of PS4 function  
(The DS4 controller must be powered off before guiding).



3. After switching on the power of PS4, plug the USB cable of the steering wheel into the USB hole on PS4; once connected, the breathing light on the steering wheel will turn blue and now you can enter the PS4 to start playing games or perform settings for the related functions.

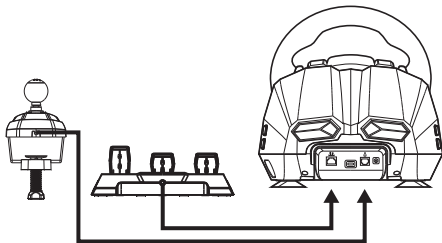


4. While operating on PS4, quickly press the "HOME" button on the steering wheel to return to the home page and long-press for 1 second to go to the shutdown setting.

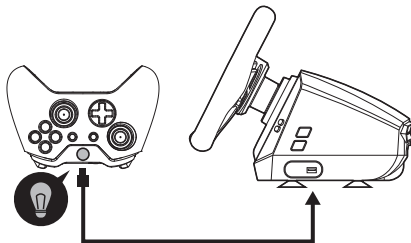


## QUICK INSTALLATION – CONNECTION WITH XBOX® ONE™ & XB SERIES X/S

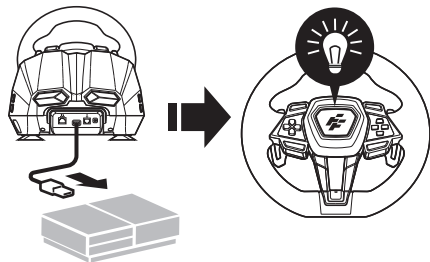
1. Plug the shifter and foot pedal into the corresponding ports on back of the steering wheel



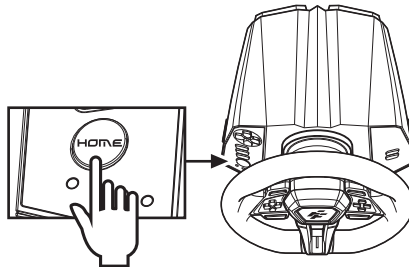
2. Plug the original Xbox controller to the USB port on back of steering wheel for guiding of Xbox function (The Xbox controller must be powered off before guiding).



3. After switching on the power of XBOX, plug the USB cable of the steering wheel into the USB hole on XBOX; once connected, the breathing light on the steering wheel will turn green and now you can enter to the Xbox to start playing games or perform settings for the related functions.



4. While operating on XBOX, quickly press the "HOME" button (equivalent to the navigation button of the Xbox controller) on the steering wheel to return to the home page and long-press "HOME" for 1 second to go to the shutdown setting.





## **| INTRODUCTION TO PC FUNCTIONS**

### **D-INPUT MODE:**

D-INPUT mode is set as default once power is connected; the breathing light will turn red. (This mode supports the force feedback function, but requires games that support force feedback).

### **X-INPUT MODE:**

Long-press the HOME button for 3 seconds, the LED will flash 3 times and then switch to X-INPUT mode (this mode does not have the force feedback function); the breathing light will turn purple, long-press the HOME button for 3 seconds again to back to D-INPUT mode.

※ X-INPUT mode does not support the six-speed shifter function

## **| PROGRAMMING ( WITHOUT MEMORY)**

### **INTRODUCTION TO PROGRAMMING FUNCTIONS:**

- The programming buttons include: A , B , X , Y , L1 , L2 , R1 , R2
- Programmable buttons include: L1 , R1 , L2 , R2 , left bumper, right bumper, clutch, accelerator, brakes, L3, R3

### **PROGRAMMING FUNCTION SETTINGS:**

- Hold down the "PROG" button for 5 seconds and the breathing LED will start flashing.
- Press a "programmable" button once and the breathing LED will start flashing slowly.
- Press the "programming" button once, the breathing LED will turn on constantly and this completes the programming.

### **CLEARING A SINGLE PROGRAMMING KEY:**

- Hold down the "PROG" button for 5 seconds and the breathing LED will start flashing quickly.
- Press a "programmable" button once and the breathing LED will start flashing slowly.
- Press the "programmable" button again, the breathing LED will turn on constantly and this completes the clearing of a single programming key.

### **CLEARING ALL PROGRAMMING FUNCTIONS:**

- Hold down the "PROG" button for 5 seconds and the breathing LED will start flashing quickly.
- Hold down the "OPTIONS" button for 5 seconds, the breathing LED will turn on constantly and all programmed button functions are cleared.

### **EXITING PROGRAMMING MODE:**

- Hold down the "PROG" button for 5 seconds, the breathing LED will start flashing quickly, then press the "PROG" button again to exit. The previous data will not change.
- Hold down the "PROG" button for 5 seconds and the breathing LED will start flashing quickly; if no actions were performed at this time, it will exit the programming mode automatically after 10 seconds.

### **ADJUSTING THE LED BREATHING LIGHT ON THE SURFACE OF THE STEERING WHEEL:**

- Breathing light colors (red, blue, green, cyan, yellow, purple).
- Long-press the "LED" button for 5 seconds (the LED will quickly flash 3 times) to enter the LED light adjustment function.
- Press the up and down buttons on the base to switch colors.
- Short-press the "LED" button (the LED will quickly flash 5 times) to exit.

## INTRODUCTION TO THE 3-PEDAL

- The left pedal is the clutch, the middle pedal is the brakes and the right pedal is the accelerator.
- The clutch requires games that support this function in order to be used; if the game does not support clutches, it will have no function or be regarded as brakes.
- In games that support the clutch function, if the clutch is set and pressed, the vehicle will not move while accelerating or braking.

## INTRODUCTION TO THE SHIFTER FUNCTION

- The six-speed shifter requires games that support it in order to function.
- The function of the "LO-HI" button on the left side of the shifter is to switch between high and low gears, when the switch is turned off, the gears are 1, 2, 3, 4, 5, 6 low gears, when the switch is turned on, the gears are 7, 8, 9, 10, 11, 12 high gears.
- The high/low gear switching function requires games that support it in order to be used (currently only truck-type games support this function).
- The "P" button on the right side of the shifter is the hand brakes; Switch this button activates the hand brake status and switching it back releases the hand brake status  
(Requires games that support it).

## COMPATIBLE GAMES LIST:

Visit our website at : [https://drive.google.com/file/d/1tkkT8\\_d-mzu3b2\\_7otaHMxTVoqNQE\\_E-/view](https://drive.google.com/file/d/1tkkT8_d-mzu3b2_7otaHMxTVoqNQE_E-/view)



## **TROUBLESHOOTING:**

- If the Breathing LED does not turn on when the steering wheel is plugged into the host, please re-plug it or check whether or not the guiding gamepad is operating normally.
- When the steering wheel does not respond or the screen of the host is stuck, the host may have accidentally crashed; please reboot the console and then insert the steering wheel.
- When the steering wheel is not operating properly in-game, please re-plug the steering wheel and then connect again.
- When connecting the guiding gamepad, the guiding gamepad must be switched off in order to prevent unsuccessful guiding due to the gamepad being connected to the steering wheel.
- If you feel that the button positions are wrong, please clear the programming by following the methods in "Clearing programming memory" or "Clearing all program designs."

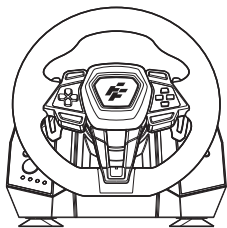
## **WARNING:**

- Avoid strong vibrations and do not disassemble, modify or repair the product by yourself.
- Avoid storing the product in humid and high-temperature locations or locations with oil fumes.
- Prevent water or other liquids from entering the interior of the steering wheel as this may affect the functions of the steering wheel.
- The voltage of this product is 24V/2A; using other powers may damage this product.
- The rotation torque of this product is larger when it is just powered on, avoid touching the steering wheel and use it when the steering wheel stops turning to avoid harming your arms.
- Keep out of children's reach, it is recommended for children to use this product only under adult supervision.

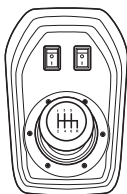
## 概述：

IMOLA力回饋遊戲方向盤是專為PC、PS4、XBOX ONE及XBOX Series X/S平台所設計的一款900度有線方向盤。外形美觀精緻，內置智能驅動馬達，配備桌面穩固支架，DC24V/2A電源，採用磁力編碼器，方向盤上電自動歸中功能，配合加油/剎車/融合腳踏板和六速排檔桿，實現真實賽車的感覺。

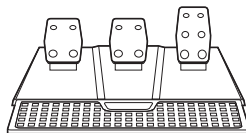
## 包裝內容：



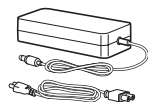
IMOLA-力回饋遊戲方向盤\*1



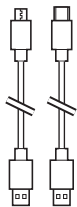
六速排檔桿\*1



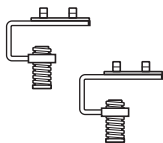
腳踏板\*1



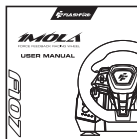
變壓器\*1



MICRO USB CABLE\*1  
TYPE-C CABLE\*1

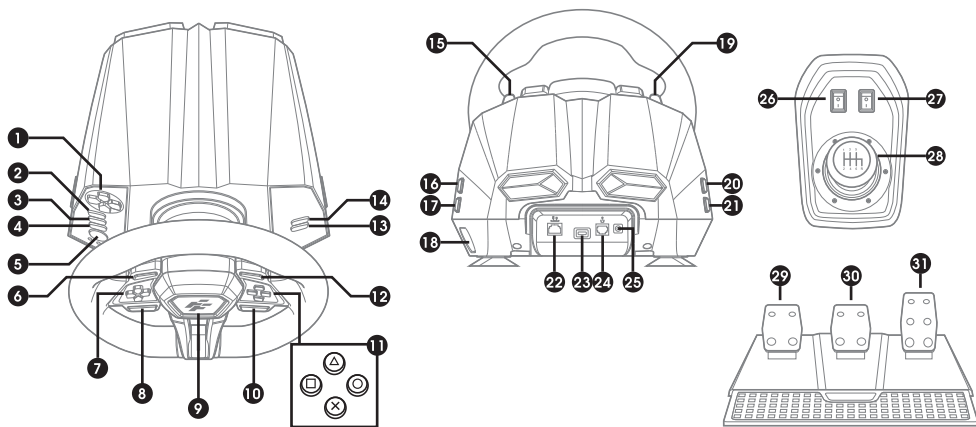


夾具\*2



說明書\*1

## 按鍵/孔位功能示意圖：



01. 呼吸燈調整鍵

02. PROG

03. L3

04. R3

05. HOME

06. L1

07. 十字鍵

08. L2

09. LED呼吸燈

10. R2

11. A/B/X/Y 功能鍵

12. R1

13. OPTIONS

14. SHARE

15. 右撥片

16. R2

17. ↑

18. 原裝手把引導接口

19. 左撥片

20. L2

21. LED呼吸燈設定鍵

22. 腳踏板接口

23. 方向盤USB接口

24. 排檔桿接口

25. 電源接口

26. MODE

27. 手刹

28. 1-6檔+R檔

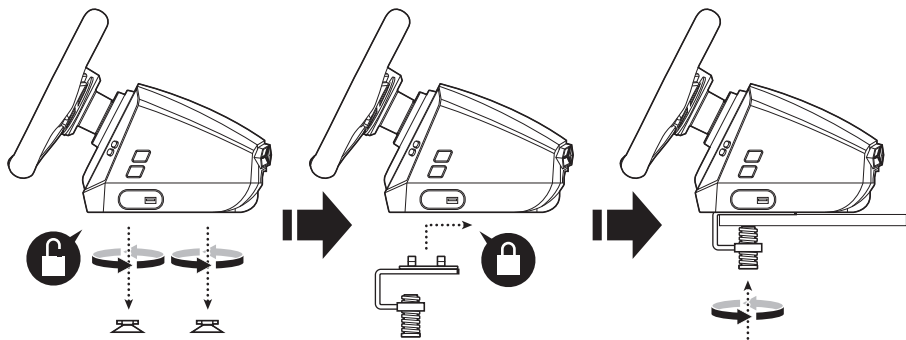
29. 離合器

30. 剎車

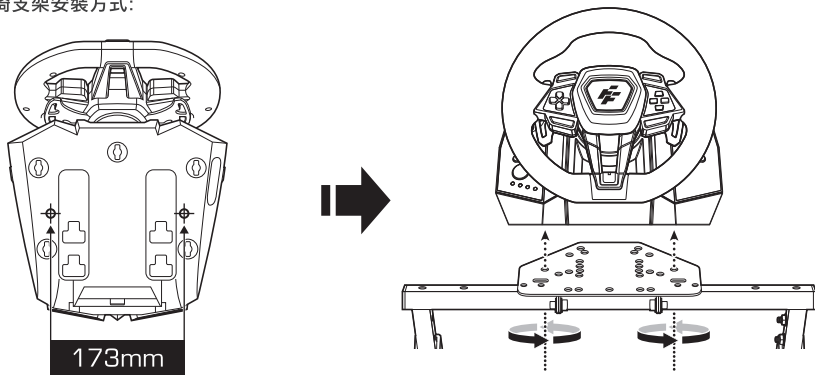
31. 油門

## I 夾具固定方式

方向盤夾具安裝方式：

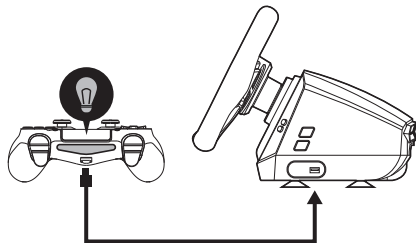
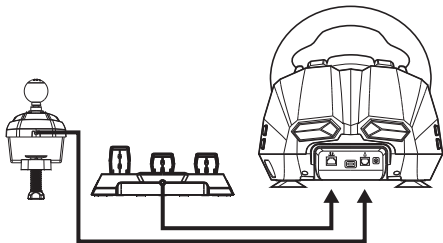


賽車椅支架安裝方式：

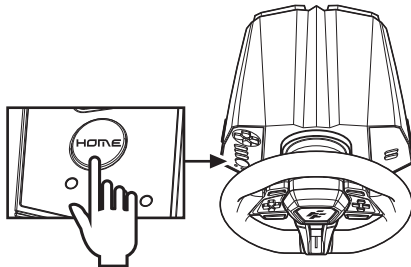
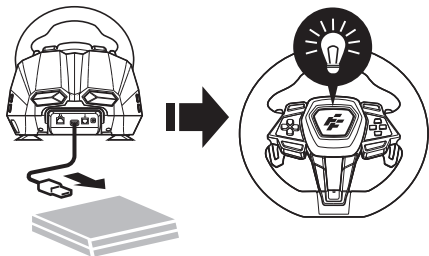


## 快速安裝 - 連接PLAYSTATION®4

1. 將排檔桿與腳踏板插入方向盤對應的插孔
2. 把PS4原廠手把USB線插入方向盤上的引導USB孔進行引導（引導手把前PS4原廠手把要先關機）。

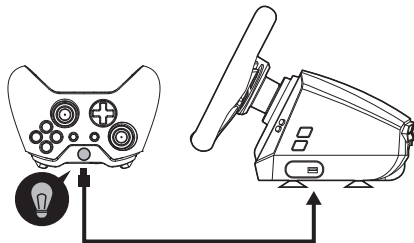
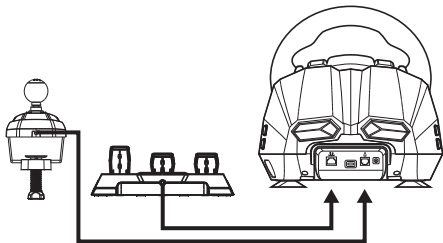


3. PS4主機電源開機後，將方向盤USB線插入PS4主機USB；連接完成後，方向盤上的呼吸燈變成藍色，此時方可進入主機開始遊戲或對主機的相關功能進行設置。
4. 在PS4主機操作中，短按一次方向盤上的“HOME”鍵可回到主頁畫面，長按1秒可到關機設置介面。

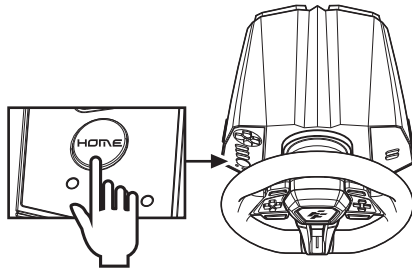
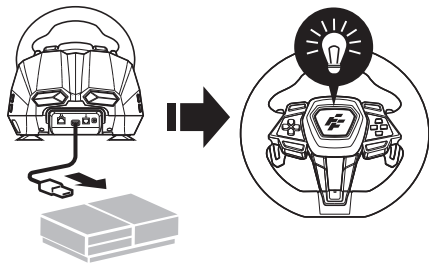


## 快速安裝 - 連接XBOX® ONE & XSX / XSS

1. 將排檔桿與腳踏板插入方向盤對應的插孔
2. 把XBOX原廠手把USB線插入方向盤上的引導USB孔進行引導（引導手把前XBOX原廠手把要先關機）。



3. XBOX主機電源開機後，將方向盤USB線插入XBOX主機USB孔；連接完成後，方向盤上的呼吸燈變成綠色，此時方可進入主機開始遊戲或對主機的相關功能進行設置。
4. 在XBOX ONE主機操作中，短按一次方向盤上的“HOME”鍵（相當於原廠手把的導航鍵）可返回主頁畫面，長按1秒“HOME”鍵可到關機設置介面。





## PC功能介紹：

### D-INPUT模式：

上電預設為D-INPUT模式，呼吸燈變成紅色。（此模式支援力回饋功能，但需遊戲支援力回饋）。

### X-INPUT模式：

長按MODE鍵3秒，LED閃3次後，切換到X-INPUT模式（此模式無力回饋功能），呼吸燈呈紫色，再長按MODE鍵3秒則切回到D-INPUT模式。

※ 注意：X-INPUT模式不支援六速排擋桿功能

## 編程功能（無記憶功能）

### 編程功能介紹：

- 編程來源鍵有：A，B，X，Y，L1，L2，R1，R2
- 可編程鍵有：L1，R1，L2，R2，左撥片，右撥片，離合，加油，剎車，L3，R3

### 編程功能設定：

- 按住“PROG”鍵5秒，呼吸燈快閃。
- 按一次“可編程”鍵，呼吸燈慢閃。
- 按一次“編程來源”鍵，呼吸燈長亮，編程完畢。

### 編程單鍵清除：

- 按住“PROG”鍵5秒，呼吸燈快閃。
- 按一次“可編程”鍵，呼吸燈慢閃。
- 再按一次“可編程”鍵，呼吸燈長亮，編程單鍵清除完畢。

### 編程功能全部清除：

- 按住“PROG”鍵5秒，呼吸燈快閃。
- 按住“OPTIONS”鍵5秒，呼吸燈長亮，所有被編程的按鍵功能清除。

### 退出編程模式：

- 按住“PROG”鍵5秒，呼吸燈快閃，再按一次“PROG”鍵退出，之前的資料不變。
- 按住“PROG”鍵5秒，呼吸燈快閃，此時若無動作，則10秒後自動退出編程模式。

### 盤面 LED 呼吸燈調整：

- 呼吸燈顏色（紅，藍，綠，青，黃，紫）。
- 長按“LED”鍵5秒（LED快閃3次），進入LED燈調整功能。
- 按底座的上下鍵來切換顏色。
- 短按“LED”鍵（LED快閃5次）退出。

## 三踏板介紹：

- 左邊踏板為離合器，中間踏板為剎車，右邊踏板為油門。
- 離合器需遊戲支援該功能才能使用，若遊戲不支援離合器則無功能或可能被識為剎車。
- 在支援離合器功能的遊戲中，如果設置且踩了離合器，則加油或剎車時車輛不會移動。

## 排檔桿功能介紹：

- 六速排檔桿需遊戲支援才有功能。
- 排檔桿上左邊“LO-HI”開關功能為切換高低檔位。當開關為關閉狀態。檔位為1, 2, 3, 4, 5, 6低檔位。開關切換為開啟狀態時，檔位為7, 8, 9, 10, 11, 12 高檔位。
- 高低檔位切換功能需遊戲支援才能使用（目前只有卡車類遊戲支援此功能）。
- 排檔桿上右邊“P”開關為手剎車，開啟此開關為啟動手剎車狀態，關閉為解除手剎車狀態（需遊戲支援）。

## 遊戲支援列表

網址：[https://drive.google.com/file/d/1tkT8\\_d-mzu3b2\\_7otaHMxTVoqNQE\\_-/view](https://drive.google.com/file/d/1tkT8_d-mzu3b2_7otaHMxTVoqNQE_-/view)



## 疑難排除：

- 當方向盤插到主機上呼吸燈不亮的時候請重插一次或檢查引導手把是否正常運作。
- 當方向盤沒有反應或主機畫面卡住時，主機可能意外死機，請重新開機主機再插入方向盤。
- 當方向盤在遊戲中操作不當時，請重新拔插方向盤後再次連接。
- 在連接引導手把時，必須將引導手把關機，以免手把與主機連接而導致引導不成功。
- 如感覺按鍵鍵位有誤，請按照”程式記憶清除”或”程式設計全部清除”的方法清除編程。

## 注意事項：

- 避免強烈震動，不可自行拆開、改裝、修理。
- 避免保存於潮濕、高溫、油煙等場所。
- 避免水或其它液體進入方向盤內部，可能會影響方向盤功能。
- 本產品電壓為24V/2A直流電源，使用其他電源可能會導致本產品損壞。
- 本產品剛通電時轉動扭力較大，儘量不要碰觸方向盤，等到方向盤停止轉動時方可使用，避免把手扭傷。
- 建議兒童需在成年人的監護下使用本產品。



[www.flashfire.tw](http://www.flashfire.tw)

FlashFire Interactive Inc.  
8F, No.14, Ln. 609, Sec. 5, Chongxin Rd.,  
Sanhong Dist., New Taipei City 24159, Taiwan  
Tel: +886-2-2278-1500

