

# FORCE WHEEL 說明書

尺寸: (W):10.5 (H) 14.85cm

折法: 騎馬釘

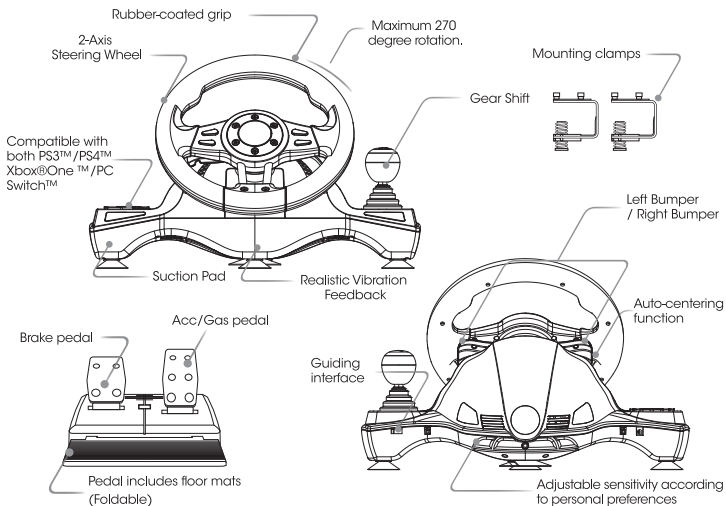


WH2304V

# ***FORCE WHEEL***

**REALISTIC RACING AT ITS BEST**

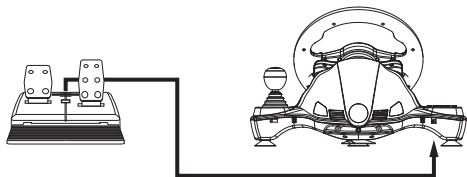
## **USER MANUAL**



TYPE	PS3™	PS4™	(X-INPUT) XBOX series	PC	Switch™
Action button	X	X	A	2	B
	O	O	B	3	A
	□	□	X	1	Y
	△	△	Y	4	X
	R1	R1	RB	6	R
	L1	L1	LB	5	L
	R2	R2	RT	8	ZR
	L2	L2	LT	7	ZL
	R3	R3	SR	12	R3
D-Pad	L3	L3	SL	11	L3
	UP	UP	UP	UP	UP
	DOWN	DOWN	DOWN	DOWN	DOWN
	LEFT	LEFT	LEFT	LEFT	LEFT
Options button	RIGHT	RIGHT	RIGHT	RIGHT	RIGHT
	START	OPTIONS	VIEW	10	+
Direction	SELECT	SHARE	MENU	9	-
Left bumper	LX	LX	←/→	←/→	LX
Right bumper	□	L2	LT	1	B
Left pedal	X	R2	RT	2	Y
Right pedal	□	L2	LT	1	B
Mode button	X	R2	RT	2	Y
Gear	MODE	MODE	X-Guide	13	HOME
	L2	L1	LB	7	ZL
	R2	R1	RB	8	ZR
	△	△	Y	4	X

## QUICK GUIDE- CONNECTION WITH PLAYSTATION®4

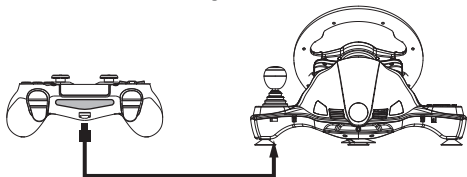
1. Insert the pedal into the pedal's port of the steering wheel.



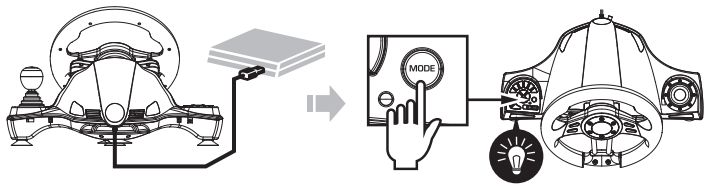
2. Power off the DS4 ( the blue LED ON means the DS4 is connected with PS4), then press the PS button until the blue LED is off. When the blue LED is off which means the DS4 is powered off.



3. Please plug the guiding controller, DS4, with the steering wheel, the port is on back of the wheel, see above image.

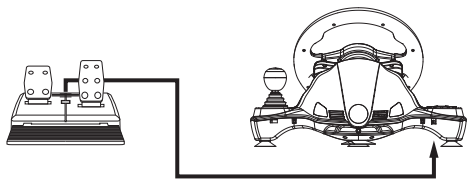


4. Connect the steering wheel, USB, to PS4, please press the "MODE" button for connection when the red LED is ON.



## QUICK GUIDE- CONNECTION WITH XBOX® ONE™ & XSX / XSS

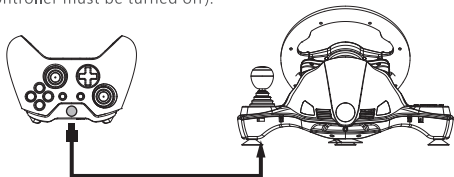
1. Insert the pedal into the pedal's port of the steering wheel.



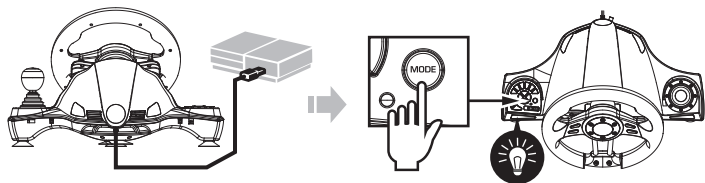
2. Power off the XB controller (the light ON means the XB controller is connected with Xbox console), then long press X button till the blue LED is off. (When Blue Led is off which means the XB controller power off!)



3. Connect the original XBOX ONE™ or XBOX Series X/S controller with the USB cable and insert the cable into the steering wheel for guiding (the XBOX ONE™ or XBOX Series X/S controller must be turned off).

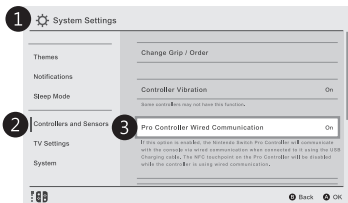


4. Connect the steering wheel, USB, to PS4, please press the "MODE" button for connection when the red LED is ON.



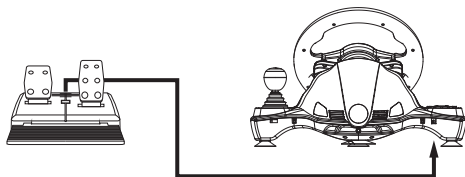
## QUICK GUIDE- CONNECTION WITH NINTENDO® SWITCH™

1. If you have not used the original "Switch Pro Controller" before, please use "JoyCon" to perform the following settings to enable the controller's wired communication function

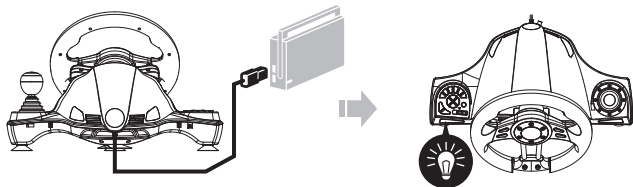


1. System Settings
2. Controllers and Sensors
3. Pro Controller Wired Communication "OFF--ON"

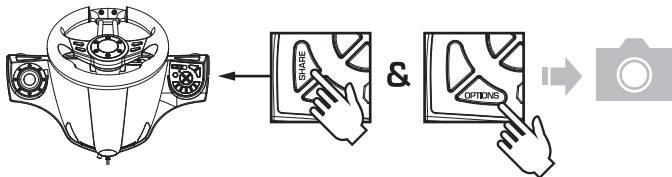
2. Insert the pedal into the pedal's port of the steering wheel



3. Insert the steering wheel USB connector into the USB of SWITCH console. The red LED on the wheel is ON, it's ready for use!



4. Screen shot: Press "SHARE" and "OPTIONS" button in the same time



## USER GUIDE:

6-in-1 wired steering wheel is designed for the PS3™, PS4™, PC, XBOXONE™, XBOX XSX/XSS and Switch™ consoles. It is compatible with various PS3™, PS4™, PC, XBOXONE™, XBOX XSX/XSS and Switch™ game titles need to support vibration). The shape is ergonomically designed in light of a racing steering wheel. This may help reduce fatigue from long-time use. It makes game control more authentic, operative and enjoyable, and is compatible with various steering wheel-controlled game titles.

## FEATURES:

- Supports Windows XP/7/8/10.
- Supports the U.S, Japanese, and European PS3™/PS4™/XBOX ONE™/XBOX XSX/XSS/Switch™ versions.
- Four LEDs for showing the working situation.
- The MODE button corresponds to the MODE button functions of PS3™/PS4™/XBOX™/XBOX XSX/XSS/Switch™.
- 2 axes, arrow key, and 12 action buttons.
- 8 self-defined editing buttons: Left wing, Right wing, Accelerator, Brake, (L3/11/SL), (R3/12/SR), Gear lever (-/+).
- 6 large durable and accessible suction discs.
- Includes foot pedals.
- 270° rotation of the steering wheel.
- The built-in deflection motor can perform the real vibration of driving.
- The sensitivity of the steering wheel can be adjusted between 3 settings to fit different game players.
- The pedal is equipped with a spring as an acceleration retarding system and gives you a more authentic driving experience.
- It needs the original controller for guiding when used on PS4™ or XBOX ONE™.

## DESCRIPTION OF FUNCTIONS:

### • Programming function

#### 1. Programming buttons

1. The programming buttons include: □/1/X, ○/3/B, △/4/Y, ×/2/A, L1/5/LB, L2/7/LT, R1/6/RB, R2/8/RT
2. The defined programmed buttons include: Left bumper (□/1/LT), right bumper (×/2/RT), accelerator pedal (×/2/RT), brake pedal (□/1/LT), L3/11/SL, R3/12/SR, gear shift (L2/7/LB, R2/8/RB)

#### 2. Programming methods

1. Press and hold SHARE/9/VIEW+OPTIONS/10/MENU for 3 seconds until the green LED lights up.
2. Press the defined button until the green light flickers.
3. Press the defining button. The green light goes out and the self-defining is completed.

#### 3. Remove single programming

1. Press and hold SHARE/9/VIEW+OPTIONS/10/MENU for 3 seconds until the green LED lights up.
2. Press the defined button and the green LED light flickers.
3. Press the defined button again to turn off the green LED light and finish the single programming.

#### 4. Remove all programming

1. Press and hold SHARE/9/VIEW+OPTIONS/10/MENU for 3 seconds until the green LED lights up.
2. Press and hold OPTIONS/10/MENU for 4 seconds until the green LED light goes out. All self-defined buttons are refreshed to the default.

#### 5. Set pedal as the Y axis

1. Press and hold SHARE/9/VIEW+OPTIONS/10/MENU for 3 seconds until the green LED lights up.
2. Press the left key of the D-Pad to turn off the green LED. The setting is successful.

#### 6. Set the left/right bumper as the Y axis

1. Press and hold SHARE/9/VIEW+OPTIONS/10/MENU for 3 seconds until the green LED lights up.
2. Press the right button of the D-Pad to turn off the green LED light. The setting is successful.

## **7. Remove setting of the left/right bumper or pedal as the Y axis**

1. Press and hold SHARE/9/VIEW+OPTIONS/10/MENU for 3 seconds until the green LED lights up.
2. Press the left/right bumper or pedal that has been set as the Y axis. The green LED flickers.
3. Press the left/right bumper or pedal that has been set as the Y axis again to turn off the green LED light and finish the removal.

< Note: All the settings are removed when the power supply of the steering wheel is discontinued. >

## **WHEEL SENSITIVITY:**

### **1. Steering wheel sensitivity settings**

1. There are three sensitivity settings: High, Middle, Low.
2. Use the 3-step pull switch.

### **2. 3-step sensitivity (LO MID HI)**

## **INTRODUCTION OF PLATFORMS:**

### **1. PS3™**

1. Insert the main line of the steering wheel to the PS3™ USB port and connect the pedal line to the interface of the steering wheel. Turn on the PS3™.
2. When the PS3™ is connected, it assigns a channel to the steering wheel automatically. The corresponding channel indicator lights up steadily.
3. You may use the PS3™ to play the game or configure settings using the PS3™ functions after the connection.
4. During operation of the PS3™, press the MODE button on the steering wheel to enter the XBM setting interface or press and hold it to enter all setting interfaces.

### **2. PC**

The steering wheel supports the X-INPUT and Direct input modes when under the PC mode. The default setting is X-INPUT. Press and hold the MODE button for 2 seconds to flicker the red LED indicator and switch to the Direct input mode.

### **3 - 1. Installation**

1. Enter the WINDOWS XP/7/8/10 system. Insert the drive disc and press SETUP twice, then install the driver according to the prompt of the system.
2. Insert the USB plug from the steering wheel to your PC → Startup → Control Panel → Equipment & Printer → Right Click Equipment → Controller Setting → Property.

### **3 - 2. Product testing**

1. Enter the test interface for the function of the buttons and axes.
2. Axes can be adjusted through the calibration interface.
3. Enter the vibration interface to test the axes and pedals (left and right).

### **3 - 3. Unload drive**

1. Startup → Control Panel → App & Function.
2. Find the drive name to be deleted in the "Unload or Change App" window. Click "Delete" and operate according to the prompt for unload.

## **TROUBLESHOOTING:**

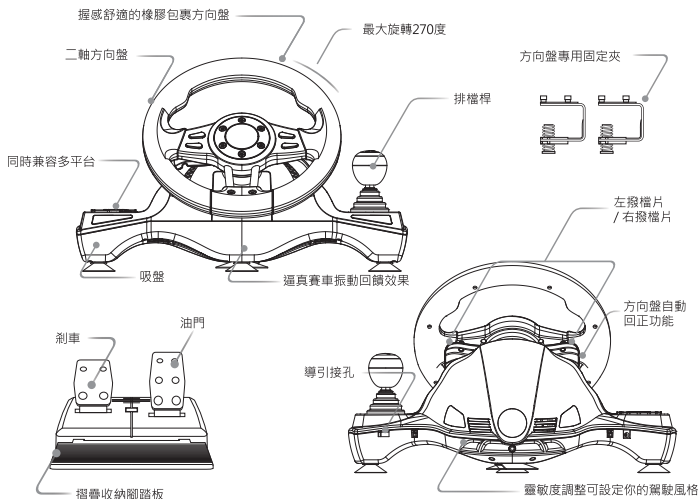
1. If the mode indicator does not light up when the steering wheel is connected to the console, connect it again or check that the guide grip works normally.



2. When the steering wheel does not respond and the console does not work, it may crash by accident. In this case, restart the console and connect the steering wheel.
3. When inappropriate operation of the steering wheel occurs during the game, pull up and insert the steering wheel to connect it again.
4. The guide grip must be off for connection to avoid automatic connection of the grip with the console and failure of the guiding.

## **NOTE:**

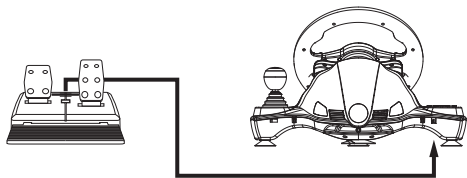
1. Read this User's Guide carefully before operation;
2. Don't shake the product violently or drop it down fiercely;
3. Don't disassemble, refit or repair the product by yourself;
4. Don't store the product in a place of high humidity, temperature or fumes;
5. Children must use the product under the guidance of adults;
6. Contact your dealer or the manufacturer if you have any questions or suggestions.



平台	PS3™	PS4™	(X-INPUT) XBOX 平台	PC	Switch™
功能 按鍵	X	X	A	2	B
	O	O	B	3	A
	□	□	X	1	Y
	△	△	Y	4	X
	R1	R1	RB	6	R
	L1	L1	LB	5	L
	R2	R2	RT	8	ZR
	L2	L2	LT	7	ZL
	R3	R3	SR	12	R3
十字按鍵	L3	L3	SL	11	L3
	UP	UP	UP	UP	UP
	DOWN	DOWN	DOWN	DOWN	DOWN
選項 按鍵	LEFT	LEFT	LEFT	LEFT	LEFT
	RIGHT	RIGHT	RIGHT	RIGHT	RIGHT
方向鍵	START	OPTIONS	VIEW	10	+
	SELECT	SHARE	MENU	9	-
左撥檔片	LX	LX	←/→	←/→	LX
右撥檔片	□	L2	LT	1	B
左踏板	X	R2	RT	2	Y
右踏板	□	L2	LT	1	B
模式鍵	X	R2	RT	2	Y
排檔桿	MODE	MODE	X-Guide	13	HOME
	L2	L1	LB	7	ZL
	R2	R1	RB	8	ZR
	△	△	Y	4	X

## 快速安裝- 連接PLAYSTATION®4

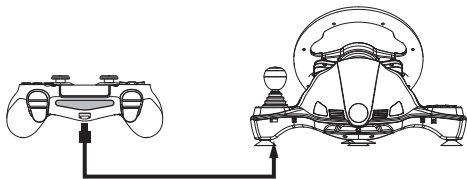
1. 將腳踏板插入方向盤的腳踏板插孔。



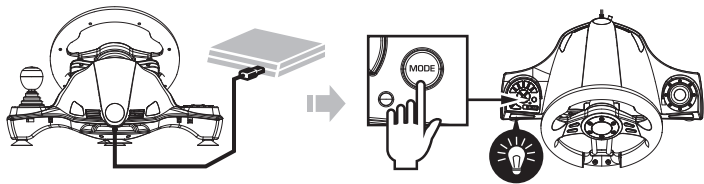
2. 將 PS4 原裝手柄電源關閉(藍燈亮表示手柄有連到PS4主機)·接著長按 PS 鍵直到藍燈熄滅·檢查藍燈熄滅表示手柄電源關閉。



3. 將引導USB線插入手柄 USB 孔·接著將引導USB線插入方向盤引導孔。

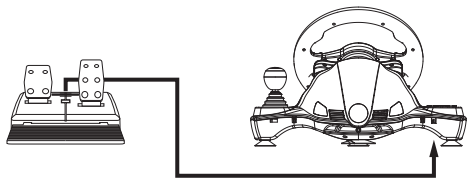


4. 將方向盤 USB 接頭插入 PS4 主機 USB 孔·當方向盤盤面紅色 LED 燈亮,再按一下 HOME 鍵連線。



## 快速安裝- 連接XBOX® ONE™ & XSX / XSS

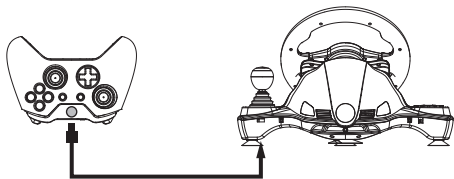
1. 將腳踏板插入方向盤的腳踏板插孔



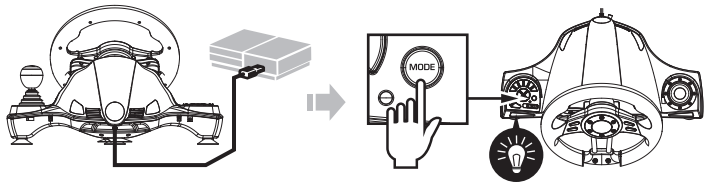
2. 將 XBOX 原裝手柄電源關閉(燈亮表示手柄有連到XBOX主機)·接著長按 XBOX 鍵直到藍燈熄滅·檢查藍燈熄滅表示手柄電源關閉。



3. 將引導USB線插入手柄 USB 孔·接著將引導USB線插入方向盤引導孔。



4. 將方向盤 USB 接頭插入 XBOX 主機 USB 孔·當方向盤盤面紅色 LED 燈亮, 再按一下 HOME 鍵連線。



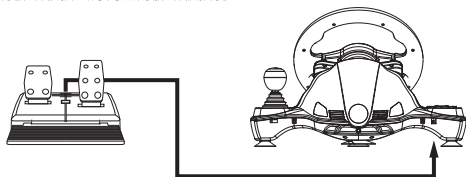
## 快速安裝- 連接 SWITCH™

1. 若之前沒有使用過原廠"Switch Pro"手柄,請先使用"JoyCon"執行以下設定開啟手柄的有線通訊功能。

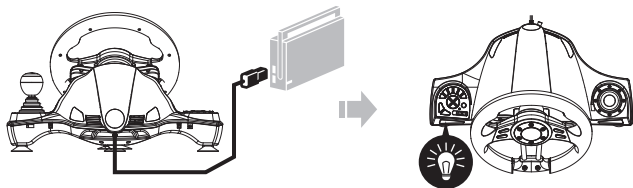


1. System Settings
2. Controllers and Sensors
3. Pro Controller Wired Communication "OFF--ON"

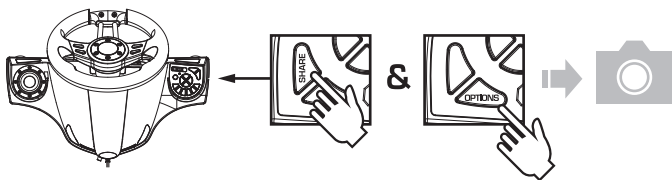
2. 將腳踏板插入方向盤的腳踏板插孔。



3. 將方向盤 USB 接頭插入 SWITCH 主機底座的 USB 孔。方向盤盤面紅色 LED 燈亮, 即可使用。



4. 同時短按一下"SHARE"和"OPTIONS"鍵, 是截圖功能。



## 概述：

六合一有線方向盤專為PC、PS4™、PS3™、XBOX®ONE™、XBOX™XSX、XSS和Switch™平台而設計。它兼容各種遊戲，可根據遊戲情況而產生不同的振動效果(遊戲支援振動)。外形按賽車方向盤設計，符合人體工程學，長時間操作不易疲勞，使遊戲控制更有真實感，增加了可操作性和趣味性，能匹配現時的各種方向盤縱橫遊戲軟體。

## 產品特色：

- 支持Windows XP / 7/8/10。
- 支持美國、日本和歐洲PS3™/PS4™/XBOX ONE™/XBOX™XSX、XSS/ Switch™版本。
- 四個LED通道燈用於顯示工作情況。
- MODE按鈕對應於PS3™/PS4™/XBOXONE™/XBOX™XSX、XSS/Switch™的MODE按鈕功能。
- 2個軸、方向鍵和12個操作按鈕。
- 8個自定義編輯按鈕：左翼、右翼、加速器、剎車、( L3 / 11 / SL )、( R3 / 12 / SR )、排檔桿 ( - / + )。
- 6個耐用耐用的大型吸盤。
- 包括腳踏墊。
- 方向盤旋轉270°。
- 內置馬達可以提供逼真的塞車體驗(必須遊戲支援)。
- 方向盤可調整三種靈敏度。
- 踏板裝有彈簧作為加速抑制系統，可為您提供更真實的駕駛體驗。
- 在PS4™或XBOXONE™上使用時，需要使用原廠控制器進行引導。

## 程式功能：

### 1. 程式設計按鍵介紹：

1. 程式設計源鍵有：□/1/X, ○/3/B, △/4/Y, ×/2/A, L1/5/LB, L2/7/LT, R1/6/RB, R2/8/RT
2. 被程式設計鍵有：左翼(□/1/LT),右翼(×/2/RT),腳加油(×/2/RT),腳剎車(□/1/LT), L3/11/SL,R3/12/SR,換檔杆 ( L2/7/LB,R2/8/RB )。

### 2. 程式設計方法：

1. 同時按SHARE/9/雙頁+OPTIONS/10/三杆鍵,按住3秒後綠色LED亮。
2. 按下被程式設計鍵,綠色LED閃;
3. 按程式設計源鍵,綠色LED滅. 程式設計完畢。

### 3. 程式設計單步清除方法：

1. 同時按SHARE/9/雙頁+OPTIONS/10/三杆鍵,按住3秒後綠色LED亮。
2. 按下被程式設計鍵,綠色LED閃;
3. 再按下被程式設計鍵,綠色LED滅. 程式設計單步清除完畢。

### 4. 程式設計全部清除方法：

1. 同時按SHARE/9/雙頁+OPTIONS/10/三杆鍵, 按住3秒後綠色LED亮,鬆開按鍵。
2. 按住OPTIONS/10/三杆鍵並保持4秒綠色LED滅,所有被程式設計的按鍵清除。恢復缺省狀態。

### 5. 將腳踏墊設為Y軸方法：

1. 同時按SHARE/9/雙頁+OPTIONS/10/三杆鍵, 按住3秒後綠色LED亮。
2. 按十字鍵的左鍵, 綠色LED滅, 設置成功。

### 6. 將左右翼設置為Y軸方法：

1. 同時按SHARE/9/雙頁+OPTIONS/10/三杆鍵, 按住3秒後綠色LED亮;
2. 按十字鍵的右鍵, 綠色LED滅, 設置成功。

### 7. 將左右翼或腳踏墊設置為Y軸清除方法：

1. 按住SHARE/9/雙頁+OPTIONS/10/三杆鍵3秒, 綠色LED亮。
2. 按一下設置為Y軸的左右翼或腳踏墊,綠色LED閃。
3. 再按一下設置為Y軸的左右翼或腳踏墊,綠色LED滅已清除完畢。

\* 備註：方向盤掉電後所有的設置會被清除。

## 方向盤三段靈敏度調整方法：

### 1. 方向盤的靈敏度設置：

方向盤的靈敏度有3級：高靈敏度、中靈敏度、低靈敏度。  
使用3段拔動開關。

### 2. 三檔靈敏度 (LO MID HI)

## 各平臺功能介紹：

### 1. PS3™

1. 將方向盤主線插入PS3主機USB介面，把配套的腳踏板線插入方向盤介面，打開PS3主機電源。
2. 在PS3主機上連接好後，主機會自動分配一個通道給方向盤，相應的通道燈長亮。
3. 連線完成後，可進入主機開始遊戲或對主機的相關功能進行設置。
4. 在PS3主機操作中，按方向盤的HOME鍵一次進入XBM設置介面，長按HOME鍵可進入各相關設置介面。

### 4. PC

#### 安裝程式：

1. 進入WINDOWS Vista/7/8/10系統，放入驅動光碟，按兩下SETUP，按電腦提示安裝驅動程式。
2. 方向盤USB插頭插入電腦→開始→控制台→設備和印表機→右鍵點擊設備→遊戲控制器設置→屬性。

#### 產品測試：

1. 進入測試介面，分別對按鍵及軸的功能測試；
2. 在校正介面可對軸進行校正；
3. 進入振動介面，可通過軸及腳踏板（左右翼）測試。

#### 卸載驅動：

1. 開始→控制台→程式和功能；
2. 在“卸載或更改程式”視窗中找到需要刪除的驅動名稱，點擊“刪除”按提示操作，即可卸載。

## 疑難排除：

1. 當方向盤插到主機上模式燈不亮的時候請重插一次或檢查引導手柄是否正常工作；
2. 當方向盤沒有反應，主機畫面不動時，主機可能意外死機，請重新開機主機再插入方向盤；
3. 當方向盤在遊戲中操作不當時，請重新拔插方向盤後再次連接；
4. 在連接引導手柄時，必須把引導手柄關機，以免手柄與主機自動連接而引導不成功。

## 注意事項：

1. 操作前，請仔細閱讀說明書。
2. 避免強烈振動及重力跌落。
3. 不可自行分拆、改裝、修理。
4. 避免保存於潮濕、高溫、油煙等場所。
5. 小孩需在成人的指導下使用。
6. 如有疑問或建議請與經銷商或廠商聯繫。





[WWW.FLASHFIRE.TW](http://WWW.FLASHFIRE.TW)

